

ONTECH

Printers - Consumables

Model Type	Model Name	DESCRIPTION
Smart 31S	SMART-31S	Single Sided Card Printer / No Encoding Option / USB
	SMART-31D	Dual Sided Card Printer / No Encoding Option / USB
	SMART-31R	Dual Sided Card Printer



Model		SMART-31S	SMART-31D	SMART-31R
Printing	Print Type	Dye-Sublimation		
	Resolution	300dpi (Color & Mono), 600 & 1200dpi (Mono Only) / Edge to Edge		
Card	Dual Side Printing	Option (with Flipper)	Yes	No
	Card Feeding	Automatic		
	Card Size	ISO CR80		
	Card Thickness	0.38mm (15mil) ~ 0.76mm (30mil)		
	Card Type	PVC, PET, Composite PVC	PVC, PET, Composite PVC	Rewritable Thermochromic Material
Print Speed	Monochrome	5 sec./card (720 cards/hour)	5 sec./card (720 cards/hour)	5 sec./card (720 cards/hour)
	YMCKO	Max. 23 sec./card (156 cards/hour)	Max. 23 sec./card (156 cards/hour)	-
	YMCKOK	-	Max. 29 sec./card (124 cards/hour)	-
Capacity	Input Hopper	80 Cards		
	Output Hopper	25 Cards		
System	Control Panel	1 LED Button		
	Supported Platforms	Microsoft Windows 7/ 8 /10, Mac OS, Linux		
	Communication	USB, Ethernet (Option)		
	Power Supply	DC 24V		
	Power Consumption	48		
	Temperature	15~35		
	Humidity	35~70%		
	WxLxH (Millimeter)	172 x 377 x 190	172 x 472 x 190	172 x 377 x 190
	WxLxH (Inch)	6.8 x 14.8 x 7.5	6.8 x 18.6 x 7.5	6.8 x 14.8 x 7.5
	Kg/lbs	3.4 / 7.5	4.2 / 9.5	3.4 / 7.5
Encoding Options	Magnetic	ISO 7811 (Track I, II, III Read/ Write, HiCo/ LoCo), JIS II		
	Contact	ISO 7816 (ID-1)		
	Contactless	MIFARE, ISO 14443 (Type A/ B), ISO 15693, DESFIRE, iCLASS		
Certifications	CB, CE, FCC, KC, CCC			

Model Type	Model Name	DESCRIPTION
Smart 51S	SMART-51S	Single Sided Card Printer / No Encoding Option / USB
	SMART-51D	Dual Sided Card Printer / No Encoding Option / USB



Model		SMART-51S	SMART-51D	SMART-51R
Printing	Print Type	Dye-Sublimation		
	Resolution	300dpi / Edge to Edge		
Card	Dual Side Printing	Option (with Flipper)	Yes	Yes
	Card Feeding	Automatic		
	Card Size	ISO CR80		
	Card Thickness	0.38mm (15mil) ~ 1.0mm (40mil)		
	Card Type	PVC, PET, Composite PVC	PVC, PET, Composite PVC	PVC, PET, Composite PVC
Print Speed	Monochrome	5 sec./card (720 cards/hour)	5 sec./card (720 cards/hour)	5 sec./card (720 cards/hour)
	YMCKO	Max. 17 sec./card (212 cards/hour)	Max. 17 sec./card (212 cards/hour)	Max. 17 sec./card (212 cards/hour)
	YMCKOK	-	Max. 22 sec./card (164 cards/hour)	Max. 22 sec./card (164 cards/hour)
Capacity	Input Hopper	100 Cards		
	Output Hopper	Front : 40 Cards, Rear: 100 Cards		
System	Control Panel	2 Line LCD ,2 LED Button		
	Supported Platforms	Microsoft Windows 7/ 8 /10, Mac OS, Linux		
	Communication	USB, Ethernet (Option)		
	Power Supply	Free Voltage (AC 100/ 220V, 50~60Hz)		
	Power Consumption	48	48	96
	Temperature	15~35		
	Humidity	35~70%		
	WxLxH (Millimeter)	172 x 377 x 190	172 x 472 x 190	172 x 377 x 190
	WxLxH (Inch)	6.5 x 15.4 x 8.3	6.5 x 19.6 x 8.3	6.5 x 26.6 x 8.3
	Kg/lbs	4.5 / 10	5.2 / 11.5	8.8 / 19.4
Encoding Options	Magnetic	ISO 7811 (Track I, II, III Read/ Write, HiCo/ LoCo), JIS II		
	Contact	ISO 7816 (ID-1)		
	Contactless	MIFARE, ISO 14443 (Type A/ B), ISO 15693, DESFIRE, iCLASS		
Certifications	Certifications			CB, CE, FCC, KC, CCC

Model Type	Model Name	DESCRIPTION
Smart 31 & 51 Consumables	RIBBON KIT (S-YMCKO, 250 CARDS) Korea	Full-color, resin black and overlay panel ribbon with cleaning roller, 250 cards/roll
	RIBBON KIT (Black, 1200 CARDS)	Resin black, with cleaning roller, 1200 cards/roll
	Print Head	Thermal Laminate head
	YMCKO Ribbon 250 images/roll : codded	YMCKO Ribbon 250 images/roll : codded
	Half panel resin black overlay panel ribbon with cleaning roll 350 card	Half panel resin black overlay panel ribbon with cleaning roll 350 card



Model Type	Model Name	DESCRIPTION
Datacard Printer	Datacard SD 260 single side	Single side
	Datacard SD 360 Dual side	Dual side
	Datacard SD 460 Dual side	Dual side with lamination



Model		SD 260	SD 360	
Printing	Print Type	Direct-to-card dye-sublimation/resin thermal transfer		
	Resolution	300 dots per inch, 256 shades per color pane		
Card	Dual Side Printing	Manual	Yes	
	Card Feeding	Automatic feed: 100-card input for 0.030 in. (0.76 mm) cards; 25-card output standard Manual feed: 1-card input; 5-card output for 0.030 in. (0.76 mm) cards (SD260)		
	Card Size	ISO CR80		
	Card Thickness	0.38mm (15mil) ~ 1.0mm (40mil)		
	Card Type	PVC, PET, Composite PVC	PVC, PET, Composite PVC	
	Print Speed	Monochrome	830 cards per hour, one-sided (black HQ*)	830 cards per hour, one-sided (black HQ*)
YMCKT		up to 200 cards per hour, one-sided (YMCKT*); up to 155 cards per hour, two-sided (YMCKT-K*)		
Capacity	Input Hopper	Extended 200-card input hopper (SD360 only)		
	Output Hopper	Extended 100-card output hopper		
System	Supported Platforms	Microsoft Windows 7/ 8 /10, Mac OS, Linux		
	Communication	Bidirectional USB 2.0 high speed; Ethernet 10 Base-T/100-Base-TX (with activity light)		
	Power Supply	220/240V, 50/60 Hz		
	Power Consumption			
	Temperature	15~35		
	Humidity	20% to 80% non-condensing humidity		
	WxLxH (inch)	L 15.4 in. x W 6.9 in. x H 8.8	L 21.2 in. x W 6.9 in. x H 8.8 in	
	WxLxH (cm)	39.1 cm x 17.5 cm x 22.4 cm	53.9 cm x 17.5 cm x 22.4 cm	
	Kg/lbs	8.1 lbs (3.7 kg) (depending on options)	12.0 lbs (5.4 kg) (depending on options)	
	Encoding Options	Magnetic	ISO 7811 (Track I, II, III Read/ Write, HiCo/ LoCo), JIS II	
Contact		ISO 7816 (ID-1)		
Contactless		MIFARE, ISO 14443 (Type A/ B), ISO 15693, DESFIRE, iCLASS		
Certifications	Certifications CB, CE, FCC, KC, CCC			

Model		SD 460
Printing	Print Type	Direct-to-card dye-sublimation/resin thermal transfer
	Resolution	300 dots per inch, 256 shades per color pane
Card	Dual Side Printing	One- or two-sided edge-to-edge printing, with standard one sided and optional two-sided lamination
	Card Feeding	Automatic feed: 100-card input for 0.030 in. (0.76 mm) cards; 25-card output standard Manual feed: 1-card input; 5-card output for 0.030 in. (0.76 mm) cards (SD260)
	Card Size	ISO CR80
	Card Thickness	0.38mm (15mil) ~ 1.0mm (40mil)
	Card Type	PVC, PET, Composite PVC
Print Speed	YMCK	Up to 200 cards per hour front side YMCK ribbon with front side lamination
		Up to 175 cards per hour front and back side YMCK-K ribbon, back side K with front side lamination. Up to 185 cards per hour (one side print and lamination with tactile) YMCK Up to 150 cards per hour (two sided printing and one sided lamination with tactile) YMCK-K
Capacity	Input Hopper	Extended 200-card input hopper (SD360 only)
	Output Hopper	Extended 100-card output hopper
System	Supported Platforms	Microsoft Windows 7/ 8 /10, Mac OS, Linux
	Communication	Bidirectional USB 2.0 high speed; Ethernet 10 Base-T/100-Base-TX (with activity light)
	Power Supply	220/240V, 50/60 Hz
	Power Consumption	
	Temperature	15~35
	Humidity	20% to 80% non-condensing humidity
	WxLxH (inch)	L 15.4 in. x W 6.9 in. x H 8.8
	WxLxH (cm)	39.1 cm x 17.5 cm x 22.4 cm
	Kg/lbs	8.1 lbs (3.7 kg) (depending on options)
Encoding Options	Magnetic	ISO 7811 (Track I, II, III Read/ Write, HiCo/ LoCo), JIS II
	Contact	ISO 7816 (ID-1)
	Contactless	MIFARE, ISO 14443 (Type A/ B), ISO 15693, DESFIRE, iCLASS
Certifications	Certifications	CB, CE, FCC, KC, CCC

Model Type	Model Name	DESCRIPTION
Datacard Consumables	Color Ribbon, ymckT (short panel)	Short Panel
	Datacard SD Ribbon YMCKT Full Color that its Print 500 image	Full



Model Type	Model Name	DESCRIPTION
Datacard Consumables	Graphics Printhead Assembly for SD	Graphics Printhead Assembly for SD
	DuraGard OptiSelect™ 0.6 mil security laminate, "Secure Globe" (full card)	DuraGard OptiSelect™ 0.6 mil security laminate, "Secure Globe" (full card)
	GRAPHICS MONOCHROME RIBBON, KIT, BLACK HQ	GRAPHICS MONOCHROME RIBBON, KIT, BLACK HQ
	DuraGard OptiSelect™ 1, mil clear	DuraGard OptiSelect™ 1, mil clear



Model Type	Model Name	DESCRIPTION
Datacard Consumables	DuraGard OptiExpress 0.6 mil Security Laminate, "Compass" Registered (Full Card)	Graphics Printhead Assembly for SD
	Ribbon Cartridge Assembly	DuraGard OptiSelect™ 0.6 mil security laminate, "Secure Globe" (full card)
	Cleaning Spindle Assembly	GRAPHICS MONOCHROME RIBBON, KIT, BLACK HQ
	DATACARD - Graphics Printhead Assembly for SP	DuraGard OptiSelect™ 1, mil clear



Model Type	Model Name	DESCRIPTION
Bravo Printers	JVC BRAVO CX7600 Retransfer card Printer	JVC BRAVO CX7600 Retransfer card Printer
	JVC BRAVO CX7000 Dual Side Retransfer Printer	JVC BRAVO CX7000 Dual Side Retransfer Printer



Model		CX 7600
Printing	Print Type	YMC Dye Sublimation, K Resin. Re-Transfer
	Resolution	600 dpi
Card	Dual Side Printing	Edge to Edge / Over the Edge / Full – Bleed (full card surface +1 mm)/ Dual side/ Lamination
	Card Feeding	
	Card Size	ISO CR80
	Card Thickness	0.25mm – 1.0mm thick
	Card Type	PVC, PET, Composite PVC
Print Speed	YMCK	Approx.: 36 sec / card, 100 cards / hour – YMCK Single Side
Capacity	Input Hopper	100 cards (Possible to add cards during printing)
	Output Hopper	
System	Supported Platforms	Microsoft® XP / Windows® 2000 Professional / Vista
	Communication	USB, Ethernet (support IPV 6)
	Power Supply	100V – 120V AC / 220V – 240V AC (auto-detect)
	Power Consumption	
	Temperature	15 C – , Humidity:35% RH – 70% RH (Non condensation)
	Humidity	
	WxLxH (inch)	343 X 347 X 381 mm (W x D x H)
	WxLxH (cm)	
	Kg/lbs	Single Side Approx: 13.5 KG (without optional equipment)
Encoding Options	Magnetic	ISO 7811 (Track I, II, III Read/ Write, HiCo/ LoCo), JIS II
	Contact	ISO 7816 (ID-1)
	Contactless	MIFARE, ISO 14443 (Type A/ B), ISO 15693, DESFIRE, iCLASS
Certifications	Certifications	CB, CE, FCC, KC, CCC

Model		CX 7000
Printing	Print Type	YMC Dye Sublimation, K Resin. Re-Transfer
	Resolution	300 dpi
Card	Dual Side Printing	Edge to Edge / Over the Edge / Full – Bleed (full card surface +1 mm)/ Dual side/ Lamination
	Card Feeding	
	Card Size	ISO CR80
	Card Thickness	0.25mm – 1.0mm thick
	Card Type	PVC, PET, Composite PVC
Print Speed	YMCK	Approx.: 36 sec / card, 100 cards / hour – YMCK Single Side
Capacity	Input Hopper	100 cards (Possible to add cards during printing)
	Output Hopper	
System	Supported Platforms	Microsoft ® XP / Windows® 2000 Professional / Vista
	Communication	USB, Ethernet (support IPV 6)
	Power Supply	100V – 120V AC / 220V – 240V AC (auto-detect)
	Power Consumption	
	Temperature	15 C – , Humidity:35% RH – 70% RH (Non condensation)
	Humidity	
	WxLxH (inch)	343 X 347 X 381 mm (W x D x H)
	WxLxH (cm)	
	Kg/lbs	Single Side Approx: 13.5 KG (without optional equipment)
Encoding Options	Magnetic	ISO 7811 (Track I, II, III Read/ Write, HiCo/ LoCo), JIS II
	Contact	ISO 7816 (ID-1)
	Contactless	MIFARE, ISO 14443 (Type A/ B), ISO 15693, DESFIRE, iCLASS
Certifications	Certifications	CB, CE, FCC, KC, CCC

Model Type	Model Name	DESCRIPTION
Bravo Consumables	YMCK Color Ribbon Yields up to 1,000 cards when using YMCK on one card side	YMCK Color Ribbon Yields up to 1,000 cards when using YMCK on one card side
	Retransfer Film Yields up to 1,000 card sides	

Model Type	Model Name	DESCRIPTION
HID Fargo Printers	HDP5000 Single Sided Printer	Single side
	DTC1250e Single-Side Base Model, USB Printer	Single side
	DTC 4500e Side Printing, BaseModel, USB and Ethernet* Printer -WITHOUT Locking Hoppers	Single side
	DTC4500e Dual-Side Printing, Base Model,USB and Ethernet*	Single side



Model	HDP 5000	
Printing	Print Type	HDP Dye-Sublimation / Resin Thermal Transfer
	Resolution	300 dpi (11.8 dots/mm)
Card	Printing	Over-the-edge on CR-80 cards
	Card Feeding	
	Card Size	CR-80 (3.370" L x 2.125" W / 85.6 mm L x 54 mm W)
	Card Thickness	.030" (30 mil) to .050" (50 mil) / .762 mm to 1.27 mm
	Card Type	PVC, PET, Composite PVC
Print Speed	YMCK	up to 24 seconds per card / 150 cards per hour (YMC with transfer)* up to 29 seconds per card / 124 cards per hour (YMCK with transfer)* up to 40 seconds per card / 90 cards per hour (YMCKK with transfer)* up to 35 seconds per card / 102 cards per hour (YMCK with transfer and dual-sided, simultaneous lamination)* up to 48 seconds per card / 75 cards per hour (YMCKK with transfer and dual-sided, simultaneous lamination)*
Capacity	Input Hopper	100 cards
	Output Hopper	200 Cards
System	Supported Platforms	Windows 8/ 7/ Vista (32bit & 64 bit) / Server 2008 & 2003/ XP; Mac OS X v10.6 / v10.5 & Linux***
	Communication	USB, Ethernet (support IPV 6)

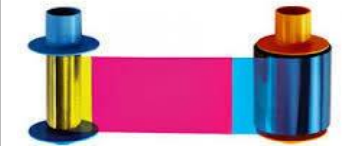
Model	DTC1250e
Print Method	Dye-sublimation / resin thermal transfer
Resolution	300 dpi (11.8 dots/mm) continuous tone
Colors	Up to 16.7 million / 256 shades per pixel
Print Ribbon Options	<p>Options include easy-to-use ribbon with disposable ribbon cartridge (EZ) and more economical and ecofriendly refill ribbon for cartridge (ECO).</p> <p>Both EZ and ECO:</p> <ul style="list-style-type: none"> • Full-color with resin black and overlay panel, YMCKO*, 250 prints ☒ • Resin black (standard), 1000 prints • ECO only: • Full-color half-panel with resin black and overlay panel, YMCKO*, 350 prints • EZ only: • Full-color with two resin black panels and overlay panel, YMCKOK*, 200 prints • Resin black and overlay panel, KO*, 500 prints • Resin black (premium), 1000 prints • Dye-sublimation black and overlay panel, BO*, 500 prints • Resin green, blue, red, white, silver, gold, 1000 prints • Silver and gold metallic, 500 prints • Rewrite technology - no ribbon is required
Print Speed**	6 seconds per card (K*); 8 seconds per card (KO*); 16 seconds per card (YMCKO*); 24 seconds per card (YMCKOK*)
Accepted Standard Card Sizes	CR-80 (3.375"L x 2.125"W / 85.6 mm L x 54 mm W); CR-79 adhesive back (3.313"L x 2.063"W / 84.1 mm L x 52.4 mm W)
Print Area	CR-80 edge-to-edge (3.36"L x 2.11"W / 85.3 mm L x 53.7 mm W); CR-79 (3.3"L x 2.04"W / 83.8 mm L x 51.8 mm W)
Accepted Card Thickness	.009" - .040" / 9 mil - 40 mil / .229 mm - 1.016 mm
Accepted Card Types	PVC or polyester cards with polished PVC finish; monochrome resin required for 100% polyester cards; optical memory cards with PVC finish; rewrite
Input Hopper Card Capacity	100 cards (.030" / .762 mm)
Output Hopper Card Capacity	Single Sided: Up to 30 cards. Dual Sided: Up to 100 cards. (.030" / .762 mm)
Card Cleaning	Card cleaning roller integrated into ribbon cartridge; cleaning roller is automatically replaced with each ribbon change
Memory	32 MB RAM

Model	DTC1250e
Software Drivers	Windows® XP / Vista™ (32 bit & 64 bit) / Server 2003 & 2008 / Windows® 7 / Windows® 8 (32 bit & 64 bit)/ MAC OS X 10.5/10.6/10.7/10.8 (Available soon) / Linux*** (Available soon)
Interface	USB 2.0, optional Ethernet with internal print server
Operating Temperature	65° to 80° F / 18° to 27° C
Humidity	20–80% non-condensing
Dimensions	Single-sided printer: 8.8”H x 13.7”W x 7.9”D / 224 mm H x 348 mm W x 201 mm D Dual-sided printer: 9.8”H x 18.7”W x 9.2”D / 249 mm H x 475 mm W x 234 mm D
Weight	Single-sided: 7.5 lbs / 3.4 Kg; dual-sided: 10 lbs / 4.54 Kg
Agency Listings	Safety: UL 60950-2, CSA C22.2 (60950-07), and CE; EMC: FCC Class A, CE (EN 55022 Class A, EN 55024), CCC, BSMI, KC
Environmental Features	ENERGY STAR® qualified card printer (base models only without encoders) and refillable supply cartridges (ECO)
Supply Voltage	100-240Vac, 50-60Hz, 1.6 Amps max
Supply Frequency	50 Hz / 60 Hz
Warranty	Printer – three years; printhead – three years, unlimited pass with UltraCard®
Encoding Options	Supported smart card and magnetic stripe technologies: 125 kHz (HID Prox) reader; 13.56 MHz (iCLASS® Standard / SE / SR / Seos, MIFARE Classic®, MIFARE Plus®, MIFARE DESFire®, MIFARE DESFire® EV1, ISO 14443 A/B, ISO 15693) read/write encoder; contact smart card encoder reads from and writes to all ISO7816 1/2/3/4 memory and microprocessor smart cards (T=0, T=1) as well as synchronous cards; ISO magnetic stripe encoding, dual high- and low-coercivity, tracks 1, 2 and 3
Supported Access Control Credential Programming	iCLASS® Standard/SE/SR/Seos, MIFARE Classic™, MIFARE DESFire® EV1, HID Prox
Options	Single wire Ethernet and USB 2.0 interface for inline printing and encoding (note: single wire Ethernet encoding is only available for iCLASS® , MIFARE®, and contact smart card encoding) - Ethernet-enabled printer supports wireless accessory; dual-sided printing module; smart card encoding modules (contact/contactless); magnetic stripe encoding module; printer cleaning kit; ethernet with internal print server; secure proprietary consumables system
Software	Swift ID™ embedded badging application, FARGO Workbench™ diagnostic utility with Color Assist™ spot-color matching
Display	Color changing status buttons

Model	DTC 4500e
Interface	USB 2.0 and Ethernet with internal print server
Operating Temperature	65° to 80° F / 18° to 27° C
Humidity	20–80% non-condensing
Dimensions	Single-sided printer: 9.8" H x 18.1" W x 9.2" D / 249 mm H x 460 mm W x 234 mm D Dual-sided printer: 9.8" H x 18.7" W x 9.2" D / 249 mm H x 475 mm W x 234 mm D Printer + lam: 18.9" H x 18.7" W x 9.2" D / 480 mm H x 475 mm W x 234 mm D
Weight	Single-sided printer: 9 lbs / 4.1 Kg; dual-sided printer: 11 lbs / 5 Kg; printer + lam: 20 lbs / 9.1 Kg
Agency Listings	Safety: UL 60950-2, CSA C22.2 (60950-07), and CE; EMC: FCC Class A, CE (EN 55022 Class A, EN 55024), CCC, BSMI, KC
Environmental Features	ENERGY STAR® qualified card printer (base models only without encoders and lamination module) and refillable supply cartridges (ECO)
Supply Voltage	100-240Vac, 50-60Hz, 1.6 Amps max.
Supply Frequency	50 Hz / 60 Hz
Warranty	Printer – three years; Printhead – three years, unlimited pass with UltraCard®
Encoding Options	Supported smart card and magnetic stripe technologies: 125 kHz (HID Prox) reader; 13.56 MHz (iCLASS® Standard/SE/SR/Seos, MIFARE Classic®, MIFARE Plus®, MIFARE DESFire®, MIFARE DESFire® EV1, ISO 14443 A/B, ISO 15693) read/write encoder; contact smart card encoder reads from and writes to all ISO7816 1/2/3/4 memory and microprocessor smart cards (T=0, T=1) as well as synchronous cards; ISO magnetic stripe encoding, dual high- and low-coercivity, tracks 1, 2 and 3
Supported Access Control Credential Programming	iCLASS® Standard/SE/SR/Seos, MIFARE Classic™, MIFARE DESFire® EV1, HID Prox
Options	Single wire Ethernet and USB 2.0 interface for inline printing and encoding (note: single wire Ethernet encoding is only available for iCLASS®, MIFARE®, and contact smart card encoding); Ethernet-enabled printer supports wireless accessory; dual-sided printing module; same-side input/output card hopper; locking card input/output hopper; smart card encoding modules (contact/contactless); magnetic stripe encoding module; printer cleaning kit; Ethernet with internal print server; secure proprietary consumables system
Software	Swift ID™ embedded badging application, FARGO Workbench™ diagnostic utility with Color Assist™ spot-color matching
Display	User friendly, SmartScreen™ graphical display
Printer Security	Printer access password protected

Model	DTC 4500e
Interface	USB 2.0 and Ethernet with internal print server
Operating Temperature	65° to 80° F / 18° to 27° C
Humidity	20–80% non-condensing
Dimensions	Single-sided printer: 9.8" H x 18.1" W x 9.2" D / 249 mm H x 460 mm W x 234 mm D Dual-sided printer: 9.8" H x 18.7" W x 9.2" D / 249 mm H x 475 mm W x 234 mm D Printer + lam: 18.9" H x 18.7" W x 9.2" D / 480 mm H x 475 mm W x 234 mm D
Weight	Single-sided printer: 9 lbs / 4.1 Kg; dual-sided printer: 11 lbs / 5 Kg; printer + lam: 20 lbs / 9.1 Kg
Agency Listings	Safety: UL 60950-2, CSA C22.2 (60950-07), and CE; EMC: FCC Class A, CE (EN 55022 Class A, EN 55024), CCC, BSMI, KC
Environmental Features	ENERGY STAR® qualified card printer (base models only without encoders and lamination module) and refillable supply cartridges (ECO)
Supply Voltage	100-240Vac, 50-60Hz, 1.6 Amps max.
Supply Frequency	50 Hz / 60 Hz
Warranty	Printer – three years; Printhead – three years, unlimited pass with UltraCard®
Encoding Options	Supported smart card and magnetic stripe technologies: 125 kHz (HID Prox) reader; 13.56 MHz (iCLASS® Standard/SE/SR/Seos, MIFARE Classic®, MIFARE Plus®, MIFARE DESFire®, MIFARE DESFire® EV1, ISO 14443 A/B, ISO 15693) read/write encoder; contact smart card encoder reads from and writes to all ISO7816 1/2/3/4 memory and microprocessor smart cards (T=0, T=1) as well as synchronous cards; ISO magnetic stripe encoding, dual high- and low-coercivity, tracks 1, 2 and 3
Supported Access Control Credential Programming	iCLASS® Standard/SE/SR/Seos, MIFARE Classic™, MIFARE DESFire® EV1, HID Prox
Options	Single wire Ethernet and USB 2.0 interface for inline printing and encoding (note: single wire Ethernet encoding is only available for iCLASS®, MIFARE®, and contact smart card encoding); Ethernet-enabled printer supports wireless accessory; dual-sided printing module; same-side input/output card hopper; locking card input/output hopper; smart card encoding modules (contact/contactless); magnetic stripe encoding module; printer cleaning kit; Ethernet with internal print server; secure proprietary consumables system
Software	Swift ID™ embedded badging application, FARGO Workbench™ diagnostic utility with Color Assist™ spot-color matching
Display	User friendly, SmartScreen™ graphical display
Printer Security	Printer access password protected

Model Type	Model Name	DESCRIPTION
HID Fargo Consumables	DTC 4000 YMCKO Cartridge - Full-color ribbon with resin black and clear overlay panel – 250 images	Full color
	DTC4500e YMCKO-500 images	Full color
	Fargo DTC 1000 color Ribbon YMCKO 250 image	Full color



Model Type	Model Name
HID Fargo Consumables	HDP5000 YMCK: Full-color ribbon with resin black panel -500 images
	HDP5000 Film-1500 images
	Retransfer roller orange for HDP 5000 printer



ONTECH

www.ontech-me.com